



FT+ MY 2026 Change

Restyled Dash on Tempo and
Onward

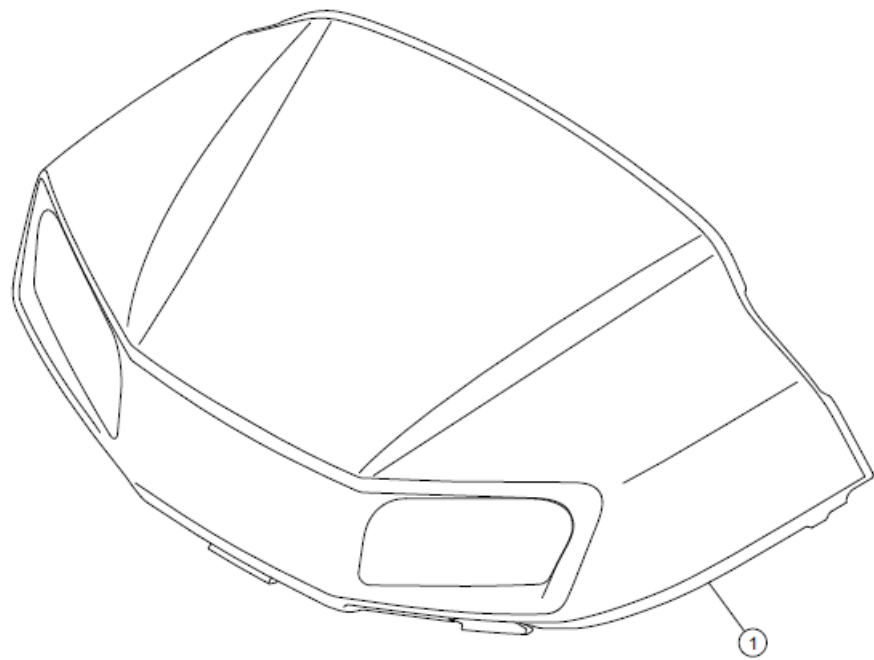


MY 2025 Legacy Dash to MY 2026 Dash

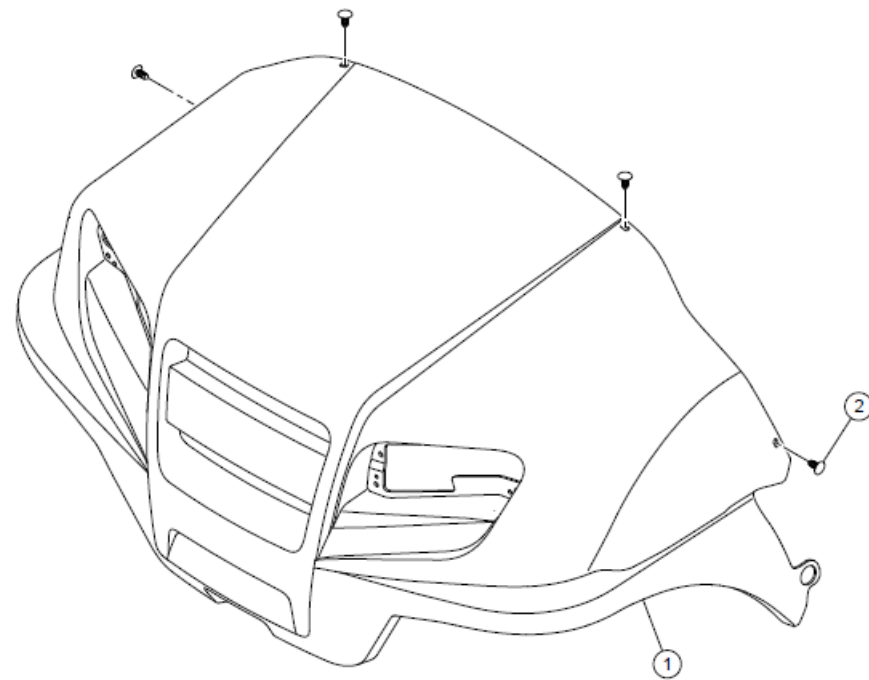
- LTFF = Light Transportation Focus Factory
 - Golf Car Platform
 - Current Production Cars
 - Tempo (Golf)
 - Tempo 2+2 (Commercial)
 - Onward (Consumer)
 - Sunset vehicles
 - Precedent (Golf and Consumer)
 - Villager 4 (Commercial)

AM Kit	Engineering Description	2025 Harnes	2026 Harnes	Marketing Short Description	Marketing Detailed Description
47762548001	KIT, PD TM, LTFF, GAS, US	47756708001	TBD	Fleet Tracker AM Kit, Golf Car Gas	Fleet Tracker Plus for Tempo, Onward and Precedent Gas MY 2014 or later. Note: Car Control is Start/Stop Only. Access Control available with RFID Option Kit 47781947001
47763877001	KIT,PD TM,LTFF,DC,TRACKING	47786180001	TBD	Fleet Tracker AM Kit, Golf DC-FLA Track/Control Only (48V+)	Fleet Tracker Plus for Tempo, Onward and Precedent DC Electric MY 2014 or later. Only use this kit when RFID/LED is not required or Club Car 12V DC-DC Converter is not installed. Variable Speed Car Control Included. RFID is not an option for this kit.
47763877002	KIT,PD TM,LTFF,DC,RFID&LED	47786178001	TBD	Fleet Tracker AM Kit, Golf DC-FLA for RFID (12V)	Fleet Tracker Plus for Tempo, Onward and Precedent DC Electric MY 2014 or later. Required for RFID/LED Kit Install. Vehicle must have a Club Car 12V DC-DC Converter installed. Variable Speed Car Control Included. Access Control available with RFID Option Kit 47781947001
47781944001	KIT, PD TM, LTFF, AC-LI	47786176001	TBD	Fleet Tracker AM Kit, Golf Car AC Electric	Fleet Tracker Plus for Tempo and Onward with AC-Lithium Powertrain. Variable Speed Car Control Included. Access Control available with RFID Option Kit 47781947001

Cowl



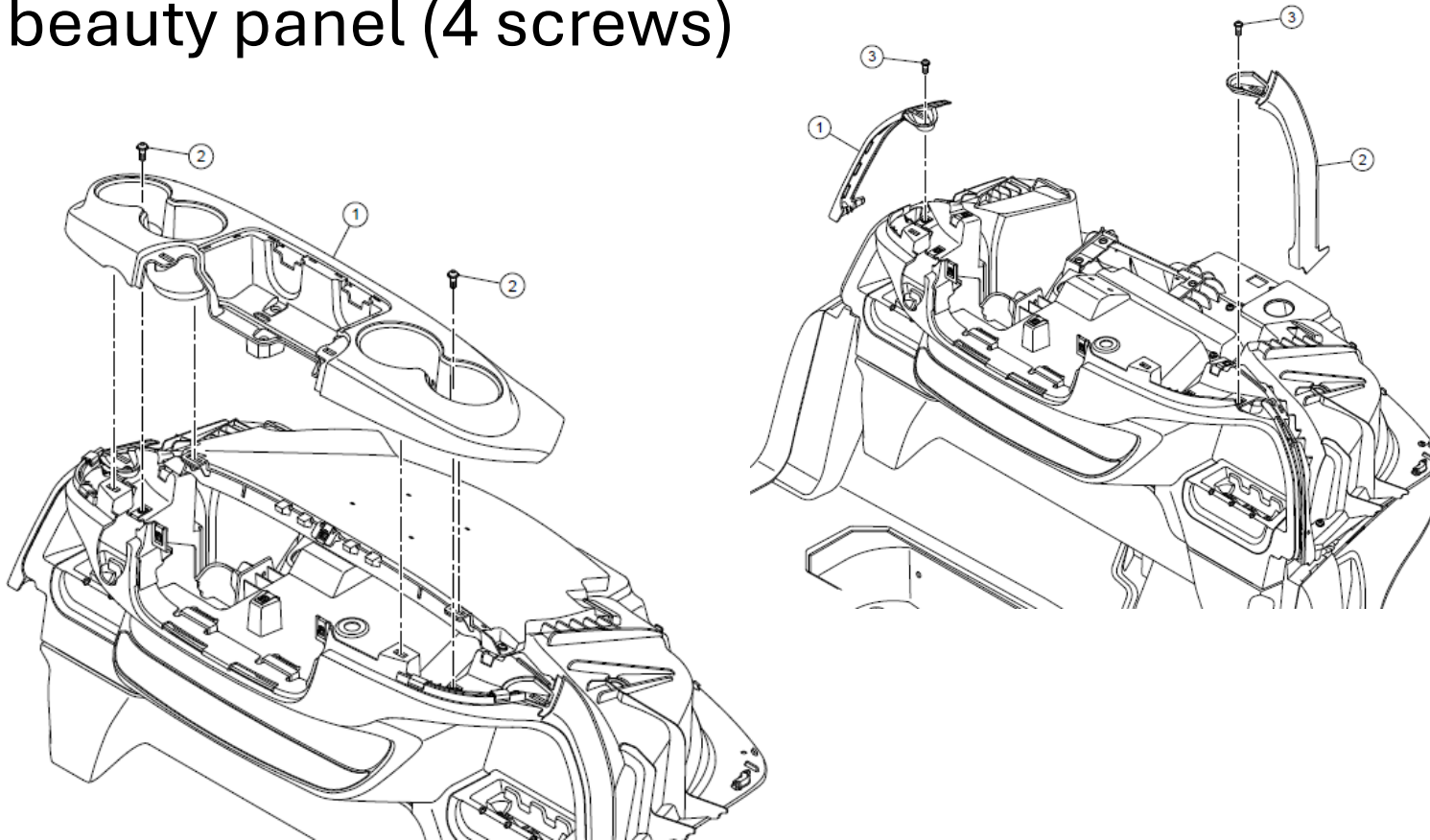
Tempo



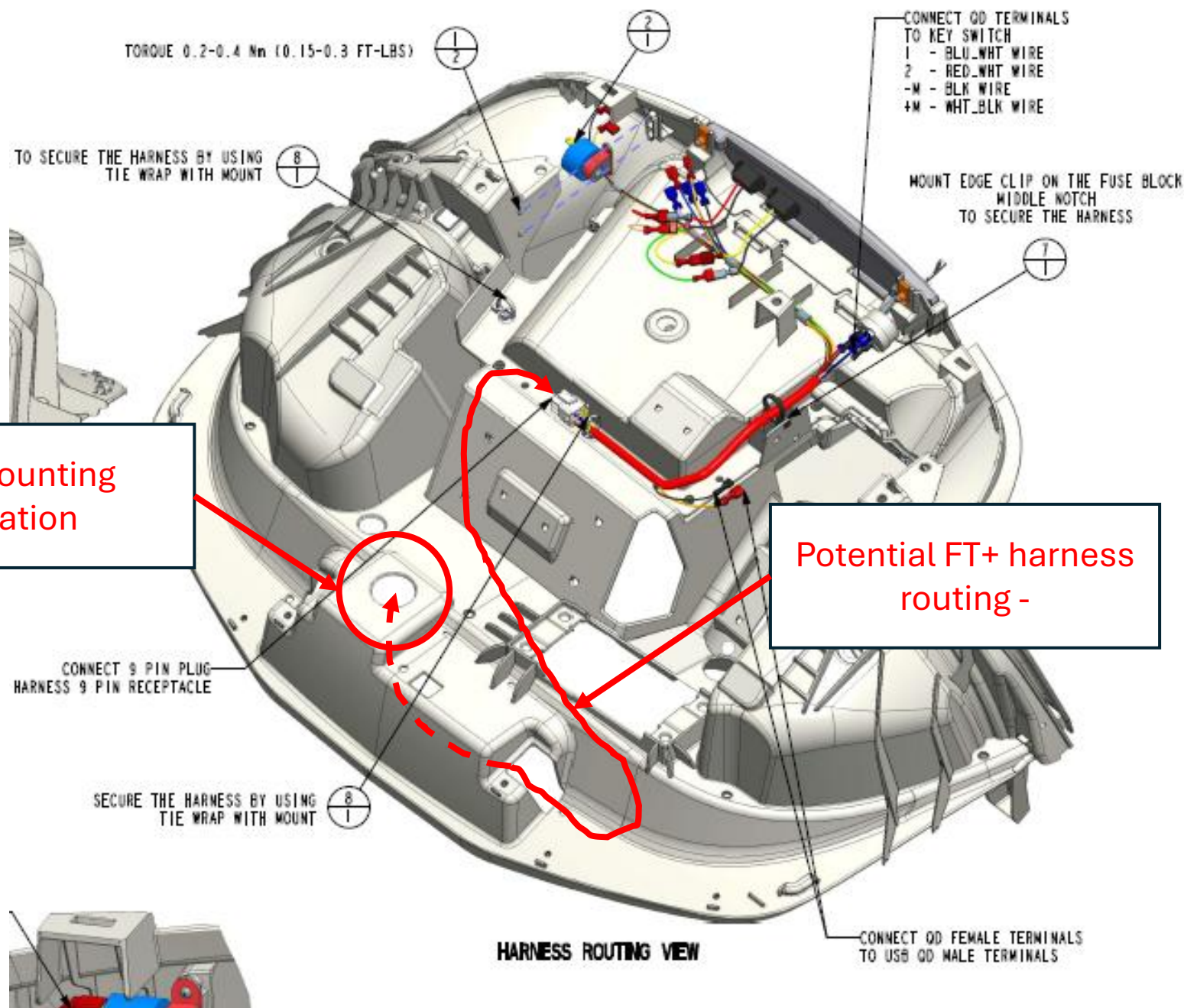
Onward

Dash

- Engineering has confirmed upper dash panel assembly (1) and upper dash side panels (1) and (2) must be removed to remove cowl beauty panel (4 screws)

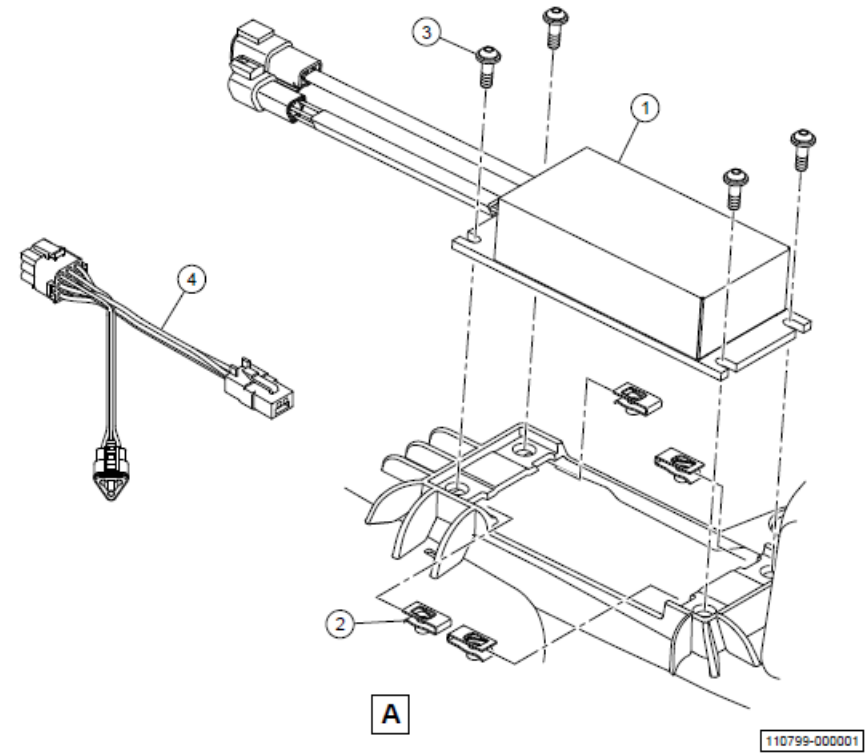
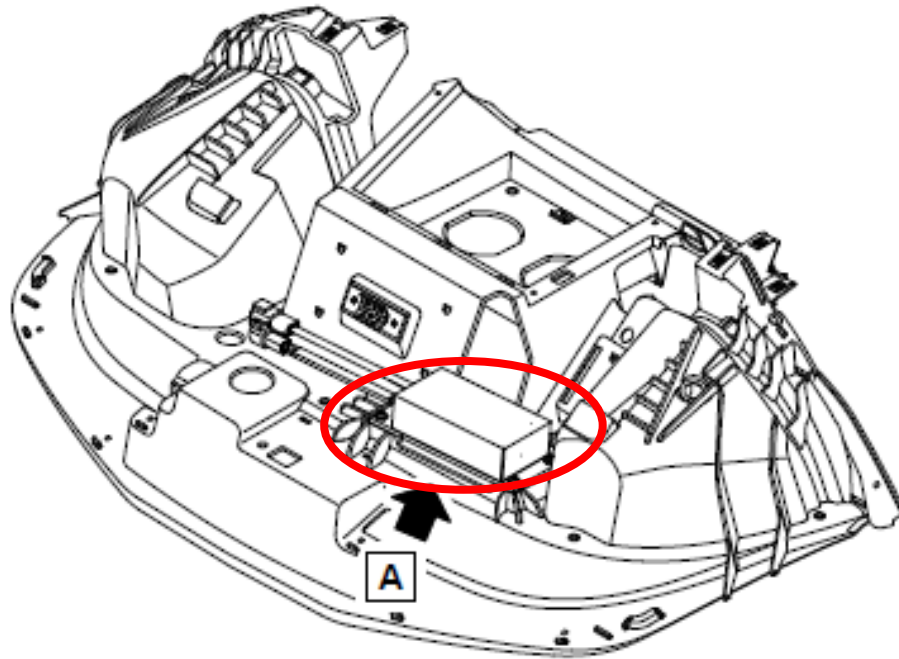


FT+ Mounting
Location



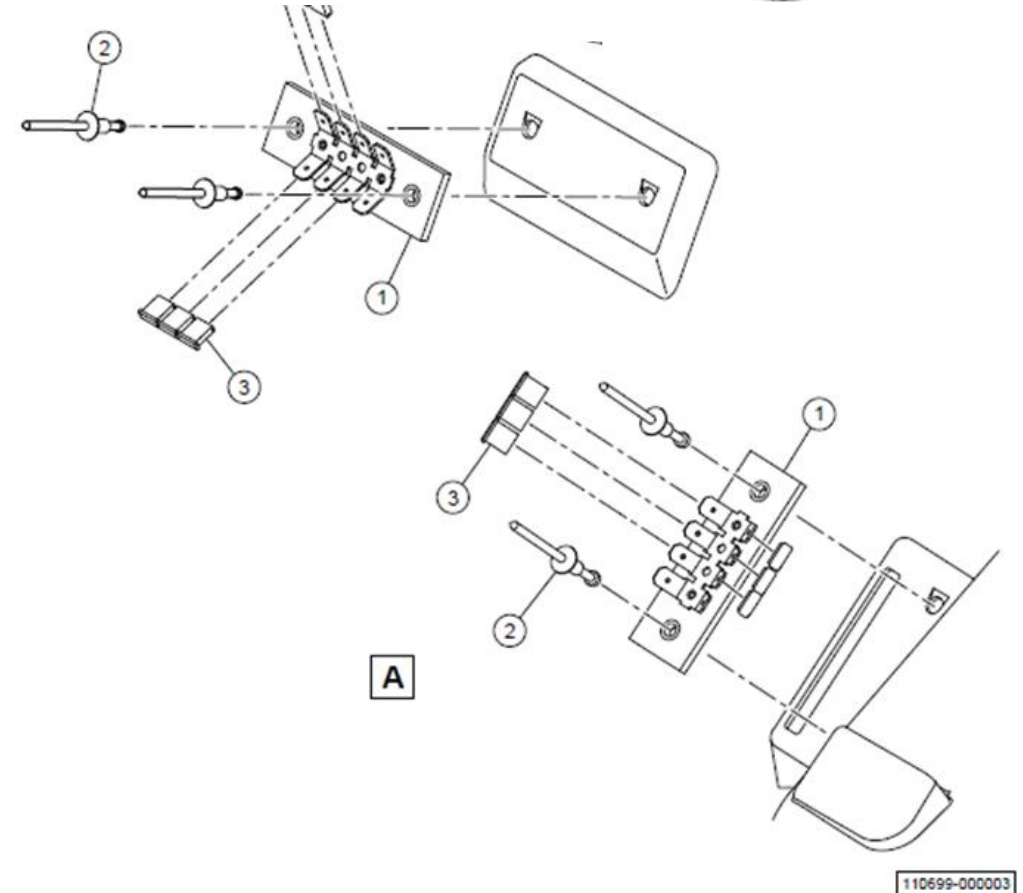
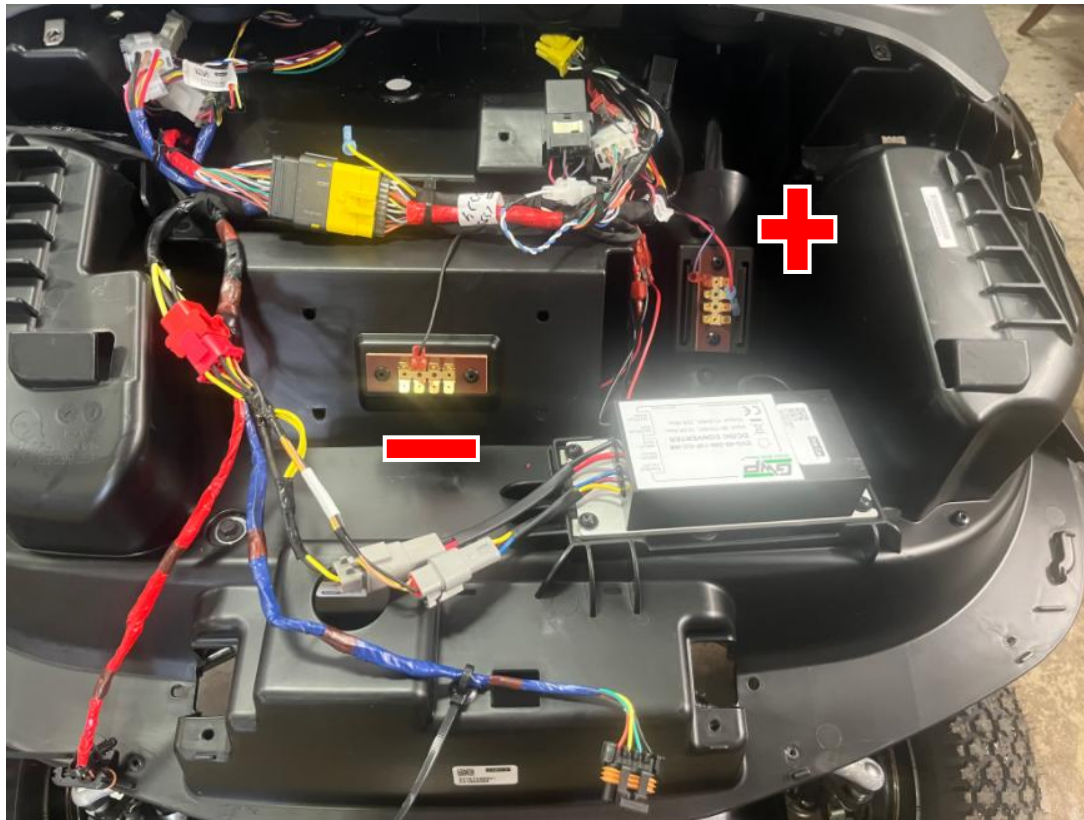
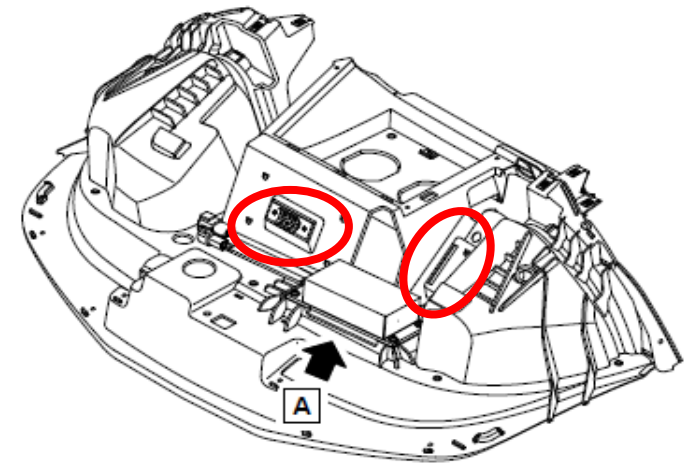
DC to DC Converter

- Standard on Onward
- Optional (rarely ordered) on Tempo Golf



Accessory Blocks

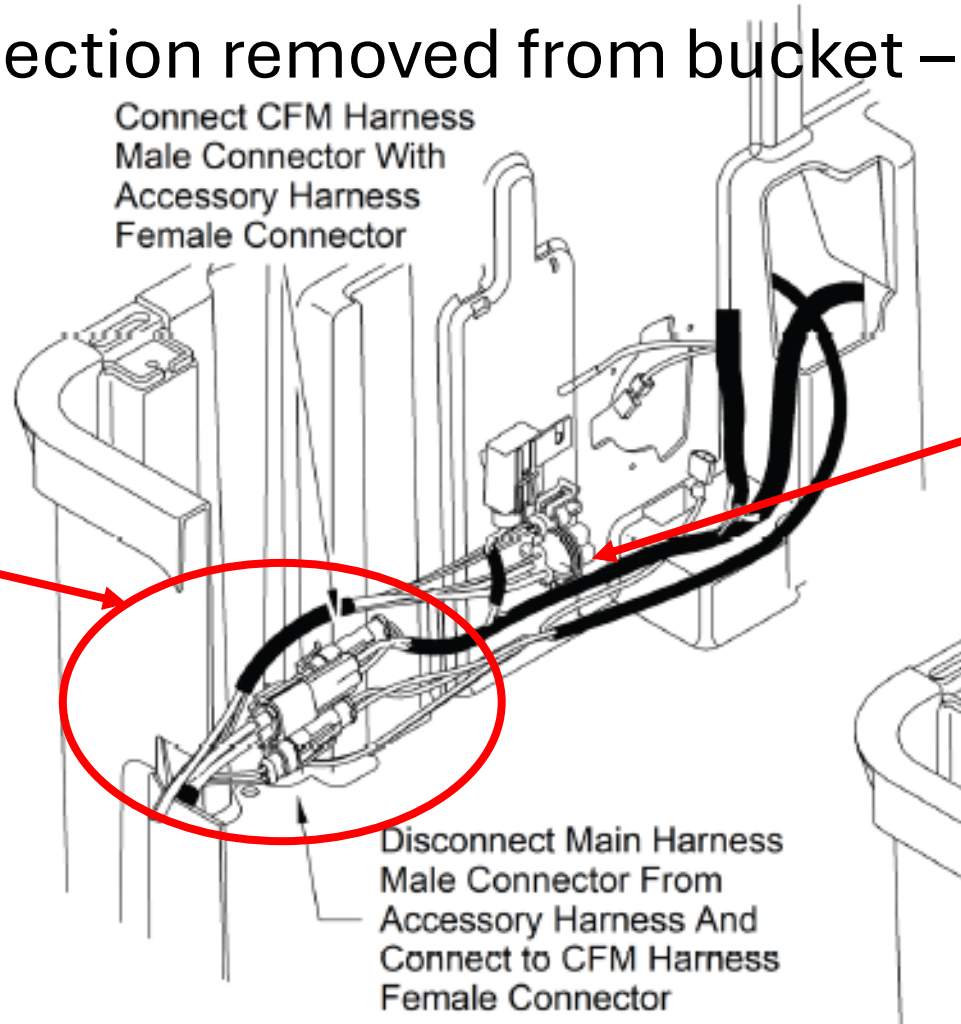
- Onward – 12V available in Dash
- Tempo – Route harness to battery bucket



Onward vs Tempo 12V Design Changes

- 2026 Tempo harness design = Same as 2025
- Onward Accessory connection removed from bucket – Connect 12V in Dash

Connect FT+ to the to 12V+ accessory(Orange and Red?) connection on the Drive Side of the battery bucket



Do not connect FT+ to the Yellow/Blue CAN wires in the center of the battery bucket